

TELEPHONE:
1300 -306- 630
(local call - Aust. wide,
except from mobile
phone)
FAX: 02-6268 5111

AUSTRALIA **AIP SUPPLEMENT**
(SUP)
AIRAC
AERONAUTICAL INFORMATION
SERVICE
AIRSERVICES AUSTRALIA
GPO BOX 367
CANBERRA ACT 2601

H11/08

FILE: 2005/5354-5

E-mail: publications.unit@airservicesaustralia.com

DATE : 17 JAN 08

WILKINS AERODROME RNAV APPROACH (YWKS)

1. INTRODUCTION

- 1.1 This SUP replaces H08/08.
- 1.2 A new aerodrome has been established at Wilkins in Antarctica. The compacted ice runway is only available to approved operators.

2. APPROACH PROCEDURE

- 2.1 An approach procedure has been created to service runway 09T.
- 2.2 The aerodrome chart and procedure are contained as attachments

3. CO-ORDINATES

- 3.1 Approach Co-ordinates for runway 09T are:

MAHWP	WKSWH	S66° 48' 35"	E111°18'57"
MAWP	WKSWM	S66° 41' 16"	E111°25'31"
FAWP	WKSWF	S66° 40' 52"	E111°12'59"
IWP	WKSWI	S66° 40' 27"	E111°00'27"
R IAWP	WKSWA	S66° 35' 38"	E110°57'11"
C IAWP	WKSWB	S66° 40' 01"	E111°47'56"
L IAWP	WKSWC	S66° 44' 58"	E111°55'09"

4. CANCELLATION

- 4.1 The procedure will be self cancelling when incorporated in DAP west, expected 200806041600.
-

5. DISTRIBUTION

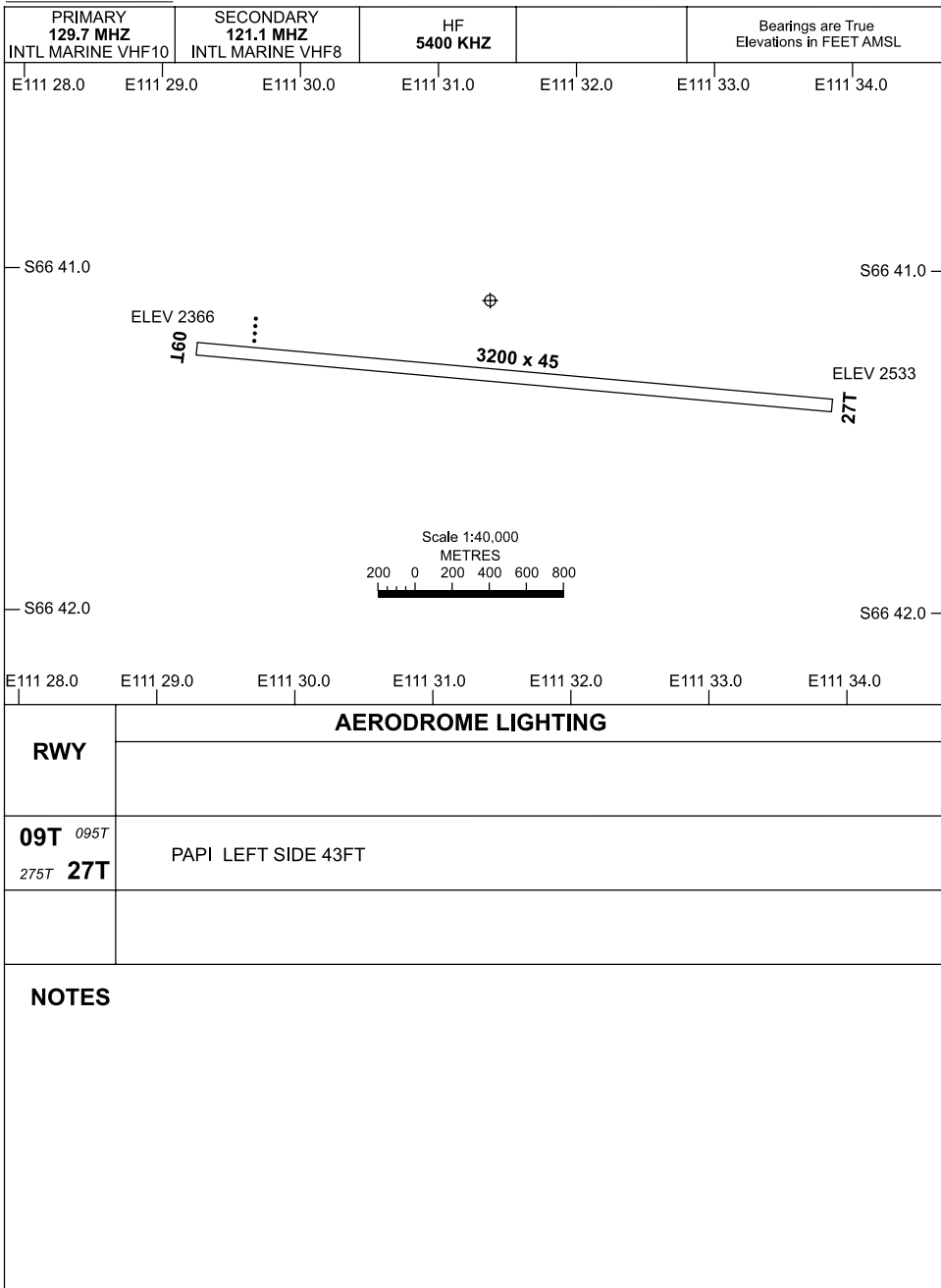
5.1 By AVFAX and Aircservices Australia website only.

**Appendix: WILKINS AERODROME CHART
WILKINS RNAV (GNSS) RWY 09T**

**APPENDIX A
TO SUP H11/08**

AD ELEV 2533
S66 41.2 E111 31.3

**AERODROME CHART
WILKINS AERODROME, ANTARCTICA (YWKS)**



Changes: NEW AERODROM CHART.

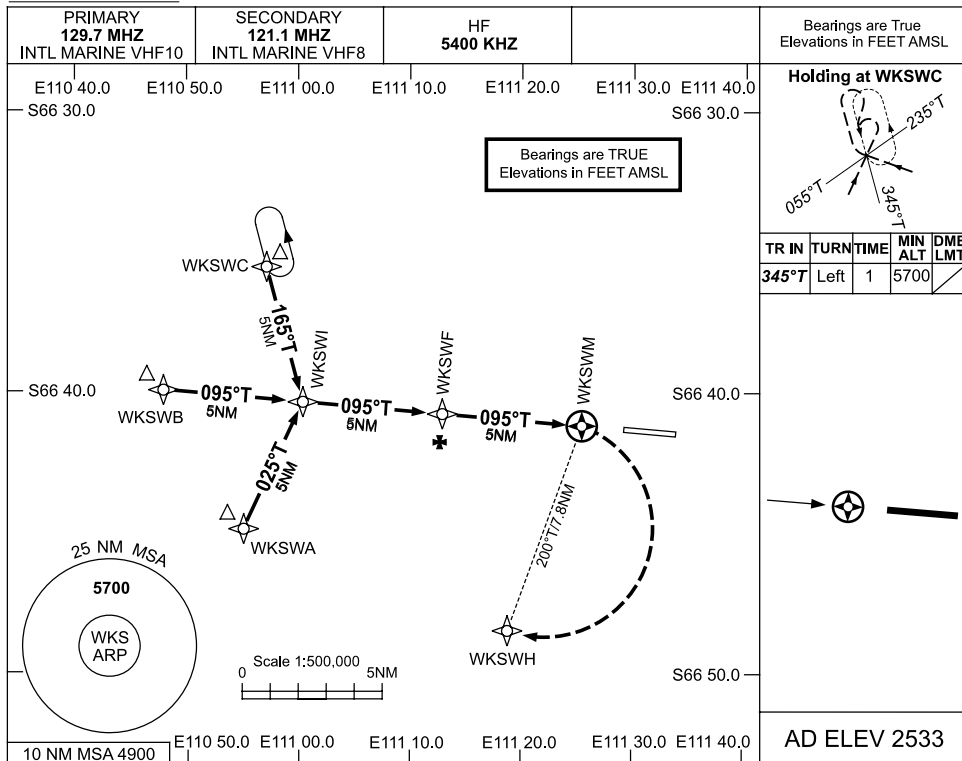
WKSAD01-SUP



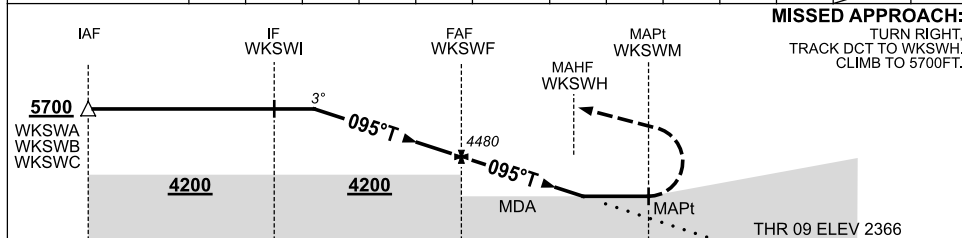
**APPENDIX B
TO SUP H11/08**

**USE QNH
WILKINS AERODROME, ANTARCTICA (YWKS)**

RNAV (GNSS) RWY 09T



NM TO NEXT WPT	4	3.8	3	2	1	WKSWF	4	3	2	1	0.3	WKSWM
ALT (3° APCH PATH)	5700	5700	5440	5120	4800	4480	4160	3840	3520	3210	2980	



MISSED APPROACH:
TURN RIGHT,
TRACK DCT TO WKSWH,
CLIMB TO 5700FT.

NOTES

- FOR APPROVED OPERATORS ONLY.
- COMPACTED SNOW/ICE RUNWAY SUBJECT TO SEASONAL VARIATION.
- READINGS FROM RADIO AND RADAR ALTIMETERS MAY BE ERRATIC OVER ICE AND SNOW SURFACES.

CATEGORY	A	B	C	D
S-I GNSS	2980 (614-3.5)			NOT APPLICABLE
CIRCLING	3620 (1087-2.4)	3880 (1347-4.0)		
ALTERNATE	(1587-4.4)		(1847-6.0)	

Changes: NEW PROCEDURE.

WKSGN01-SUP